

Windows Vista Installation Instructions for Students

The PLATO® Interactive Mathematics Web Client is an alternative platform to the standard client (installed from the CD) allowing students to connect to a PLATO® Interactive Mathematics database to run lessons. The Interactive Mathematics Web Client addresses and eliminates several potential issues with installation, Authorware, and connectivity.

NOTE: If you already have Interactive Mathematics installed from a previous semester, it's not necessary to reinstall the software when you receive new CD's with your new books. If you're using the most recent version (11.0 w/ patch or 11.1) installing the new CD's is not necessary.

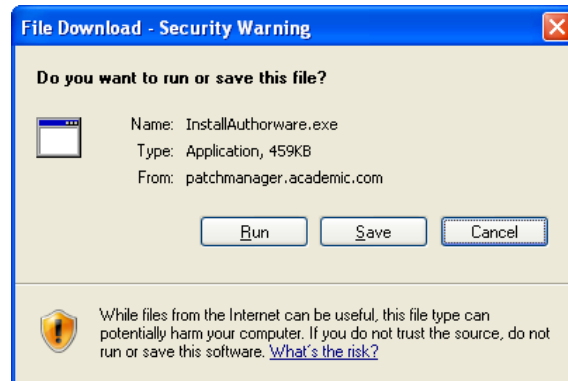
These instructions are for students with the following configuration:

- **Windows Vista and Internet Explorer 7**

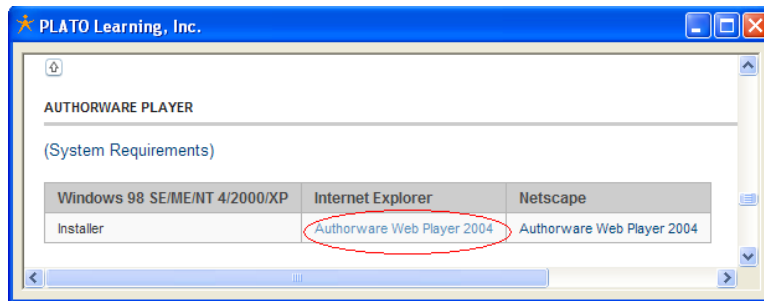
1. Temporarily disable anti-virus software (ex. Norton, McAfee) before installing web client. Anti-virus programs usually can be accessed by right clicking on the appropriate icon in the lower right hand corner near the windows clock. Once the installation is completed successfully, re-enable the anti-virus software.
2. If you have not already followed the direction that came with your Interactive Mathematics Client installer CD please continue with the next step in this document. If not, follow the instructions on the Interactive Mathematics Client installer CD to install the Interactive Mathematics client. Click "OK" to any error messages you may receive. These errors will be corrected in the next steps.

After starting the patch installations, Internet Explorer may prompt you with security or information windows, click "OK" or "Allow" when this occurs.

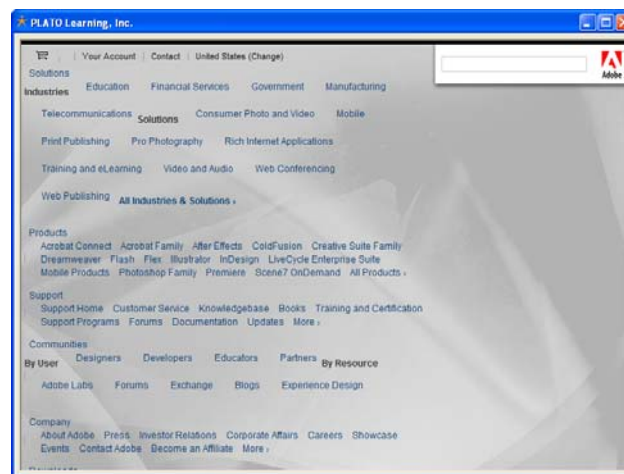
A similar window may appear during the patch installations, if so, click "Run" in each instance.



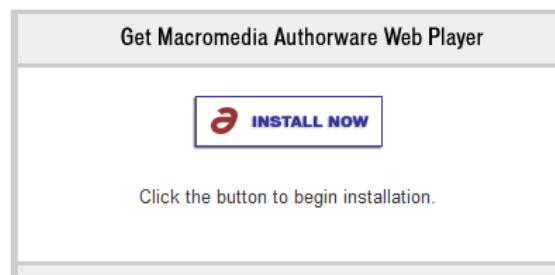
3. Install the Authorware Web Player 2004. Click [here to get the Authorware Web Player 2004](#).
4. When the page opens, scroll down to the Authorware section. Click the "Authorware Web Player 2004" link under Internet Explorer for Windows



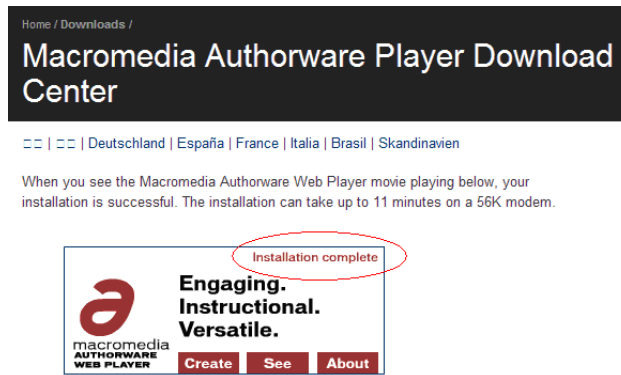
5. A similar window shown below will appear. If there isn't a scroll bar on the right side of the window, use the **DOWN ARROW** or **PAGE DOWN** key on your keyboard until you see the option for "Install Now"



6. Click "Install Now" to begin the installation

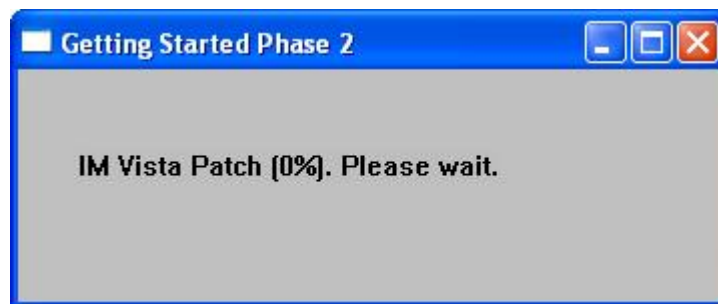
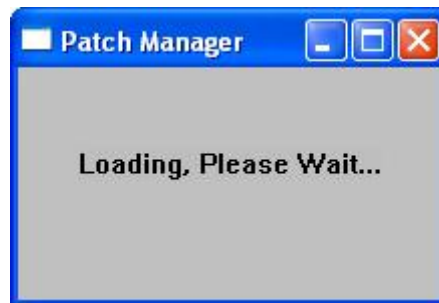


7. When you see the window below which says Installation Complete, you can close this window.

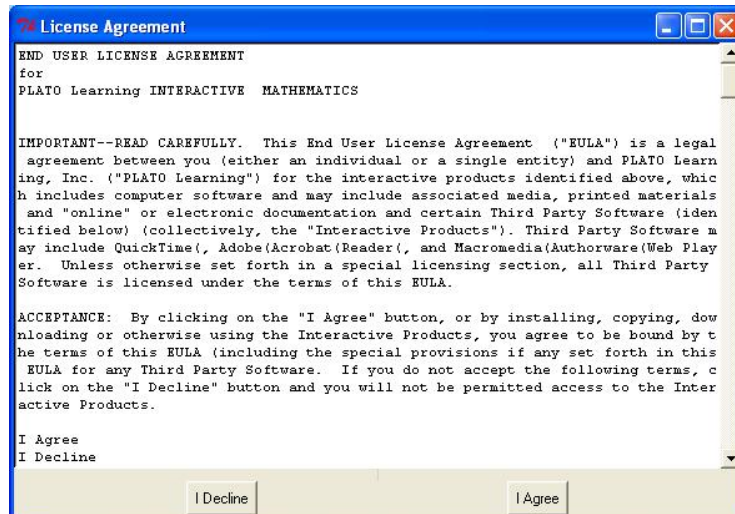


8. Install the Interactive Mathematics Student Web Client. [Click here to begin this installation](#)

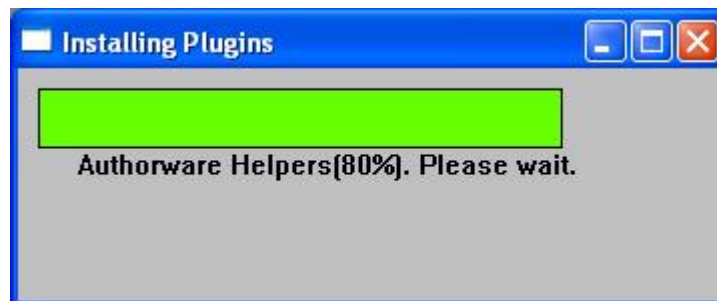
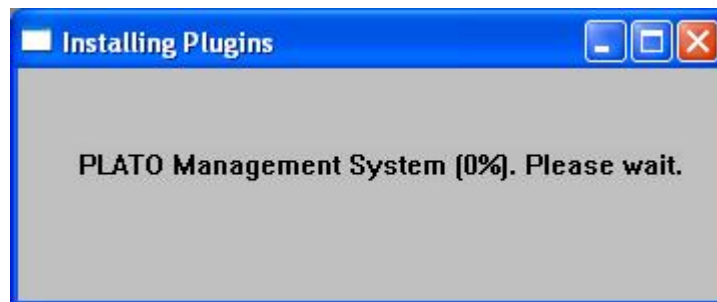
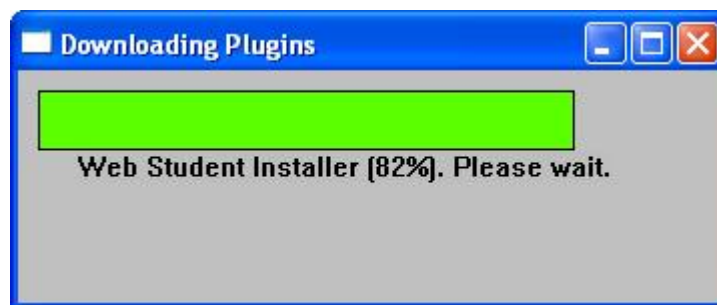
Similar windows below will appear showing installation progress:



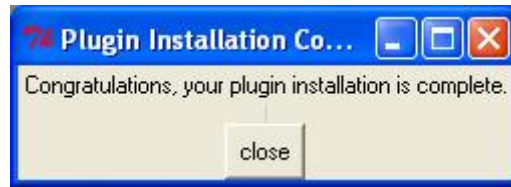
9. Click "I Agree" to accept the License Agreement



10. Several more progress windows will appear:



11. When the installation is complete, the following window will appear. Click "Close"



12. A new Interactive Mathematics icon will appear on the desktop called “IM Student Web” which you will now use for Interactive Mathematics. Delete the other icon called “Interactive Mathematics” from the desktop. The program will prompt you to load the appropriate lesson CD in your CD-ROM drive.



13. Re-enable your anti-virus software.

If you have any questions or problems with the installation instructions, please contact PLATO Support at 952.607.3899 or http://platosupport.plato.com/contact/academicsupport_request.asp for further assistance. Please reference a case number when contacting us if you previously received one.